

## How to update the firmware of StoreJet?

### Attention:

1. The tool only supports SJ25M3, SJ25D3, SJ25H3P, SJ25A3K, and SJ35T3.
2. All USB 2.0 external hard drives or non-StoreJet products are out of the support list.

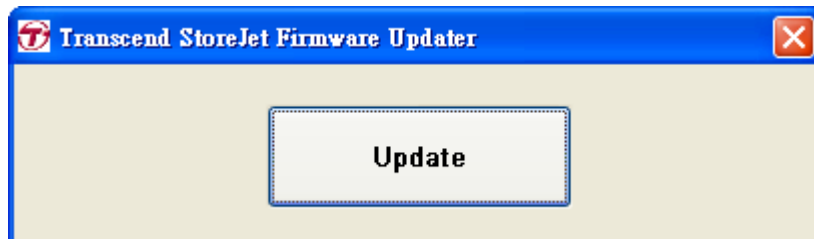


### 1. Make sure your StoreJet can be detected by PC.

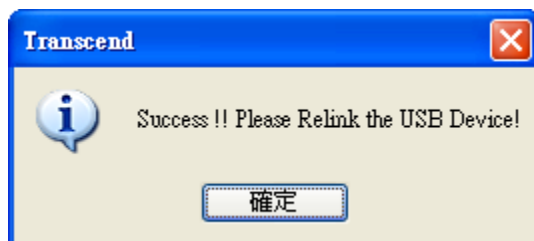
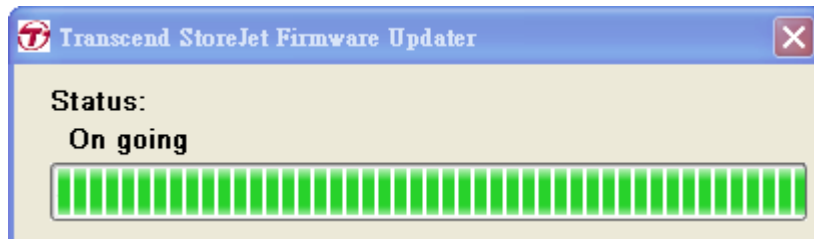
Please connect both ends of the cable, or both data and power cables are connected to your computer's rear USB ports.

Avoid using USB hubs, extension cables or other USB devices, as they often do not supply sufficient power for external hard drives.

### 2. Execute the software and click the Update button.



### 3. Then the rate of progress will show up a status message.



### 4. If you get a failed result, please repeat above steps again.

If the status remains failed, please contact with us.